



AFS-460-DSS

Differential Pressure Switches (Metal)

The Model AFS-460-DSS is a general purpose airflow proving switch designed for 120 VAC HVAC and Energy Management applications where dual manual reset switches with SPST contacts are needed. It may be used to sense positive, negative, or differential air pressure. The plated housing contains a diaphragm, a calibration spring, and 2 snap-acting switches with a single manual reset button. An enclosure cover guards against accidental contact with the live switch terminal screws and the set point adjusting screw. The enclosure cover accepts two 0.5" (12.7 mm) conduit connections. The manual reset button is located on the top surface of the enclosure cover.

Applications: Monitoring Filter Blockage, Proof of Flow, Prove Excessive or Insufficient Flow, Alarms and Control

The AFS-460-DSS Series is covered by ACI's Two (2) Year Limited Warranty. The warranty can be found in the front of ACI's Sensors & Transmitters catalog, as well as on ACI's website, www.workaci.com.

PRODUCT SPECIFICATIONS

Input Pressure Range:	1.25 ± 0.06" w.c. to 12.0" w.c. (31.8mm ± 1.52mm w.c. to 305 mm w.c.)
Set Point Range, Input Pressure Range:	1.25 ± 0.06" w.c. to 12.0" w.c. (31.8mm ± 1.52mm w.c. to 305 mm w.c.)
Field Adjustable "Operate" Range:	1.31" w.c. to 12.0" w.c.
Contact (Load) Rating:	@ 60 Hz, 15 amp 125, 250, or 277 v AC ¼ hp 125 v AC, ½Hp 250 VAC ½ amp 125 v DC, ¼ amp 250 v DC 0.5 VA @ 24 v AC, 50/60 Hz
Contact Arrangement:	2 SPST-NC Lead/Lag (manual reset)
Measured Media:	Air, or combustion by-products that will not degrade silicone
Maximum Pressure:	½ psi (0.03 bar; 3.45 kPa)
Life Expectancy:	Exceeds UL-recognized mechanical endurance test of 6,000 cycles minimum at 0.5 psi (0.03 bar, 3.45 kPa) maximum pressure each cycle and at maximum electrical load
Operating Temperature Range:	-40 to 180°F (-40 to 82°C)
Operating Humidity Range:	10 to 95% RH, non-condensing
Mounting Direction:	Mount with the diaphragm in any vertical plane
Enclosure Material:	Galvanized Steel
Sample Line Connections:	Connectors will accept ¼" (6.35mm) OD rigid or semi-rigid tubing
Electrical Connections:	Screw top terminals with cup washers
Conduit Opening:	7/8" diameter opening accepts ½" conduit
Agency Approvals:	UL & CSA approved; CE pending
Product Dimensions (H x W x D):	6.13" x 3.88" x 3.56" (155.702 mm x 98.552 mm x 90.424 mm)
Product Weight:	1.2 lbs (0.544 kg)

RELAY FUNCTION

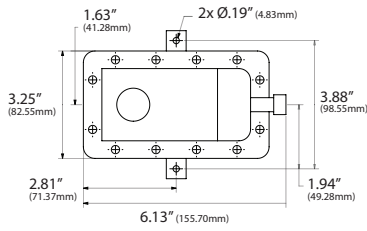
Lead Switch A Set Point	Lag Switch B Set Point
1.25" - 3.00" w.c. (31.8 - 76.2 mm w.c.)	Up to 5% After Switch A
3.00" - 6.00" w.c. (76.2 - 152.4 mm w.c.)	Up to 10% After Switch A
6.00" - 9.00" w.c. (152.4 - 229 mm w.c.)	Up to 15% After Switch A
9.00" - 12.00" w.c. (229 - 305 mm w.c.)	Up to 35% After Switch A



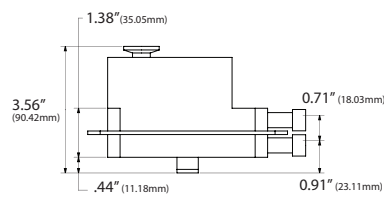


DIMENSIONAL DRAWING

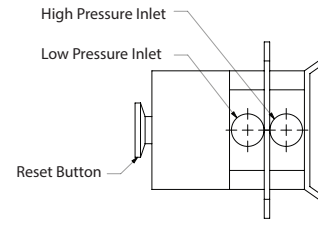
AFS-460-DSS



Front View



Right View



Top View

STANDARD ORDERING

Model # Example: **AFS-460-DSS** -OR- **101792**

Model #	Item #	Pressure Range	Contact Style	Reset Style	Compression Fitting
AFS-460-DSS	101792	1.25 to 12.0" wc	2 SPST-N/C	Manual	•