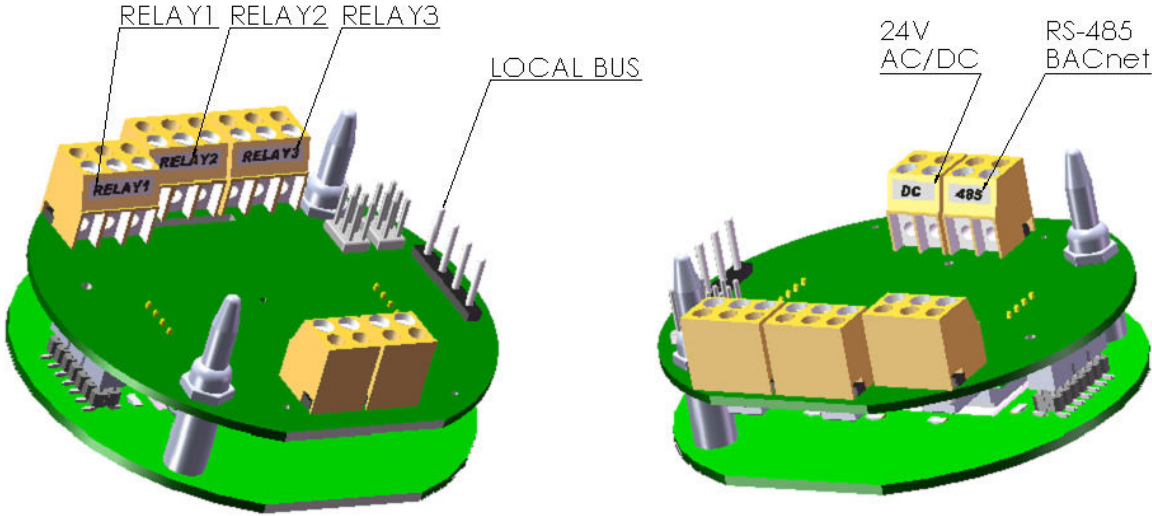


REVISIONS				
ZONE	REV.	DESCRIPTION	DATE	APPROVED
-	-	See Sheet1	-	-

Power and RS-485 BACnet MS/TP Connection



Location:

The B8 Sensor/Transmitter should be mounted where the gas to be measured is most likely to be present. This location will be dependent on the source of the target gas and whether that gas is lighter or heavier than air. Air circulation and mixture should also be taken into account.

3/4"NPT cable/conduit entries on UL/CSA versions.

Where possible, the sensor/transmitter should be mounted where it is accessible for the purposes of routine re-calibration and **periodic** sensor replacement. Sufficient room should be left to allow the enclosure cover to be removed and the connection of the calibration adapter to the sensor assembly. For sensor element replacement there will need to be enough room to reach into the sensor assembly.

Note:

Avoid mounting the electronics near 600 VAC switchgear and other sources of radio frequency and/or electromagnetic interference. While RFI/EMI protection is built in to the electronics, excessive levels of interference may cause instability in the output signal.

Warning:

GROUNDING - The industrial explosion-proof metal enclosure must be connected to a safety ground, either locally or back at the monitor, in order to provide immunity to Electromagnetic Interference.

NOTE:

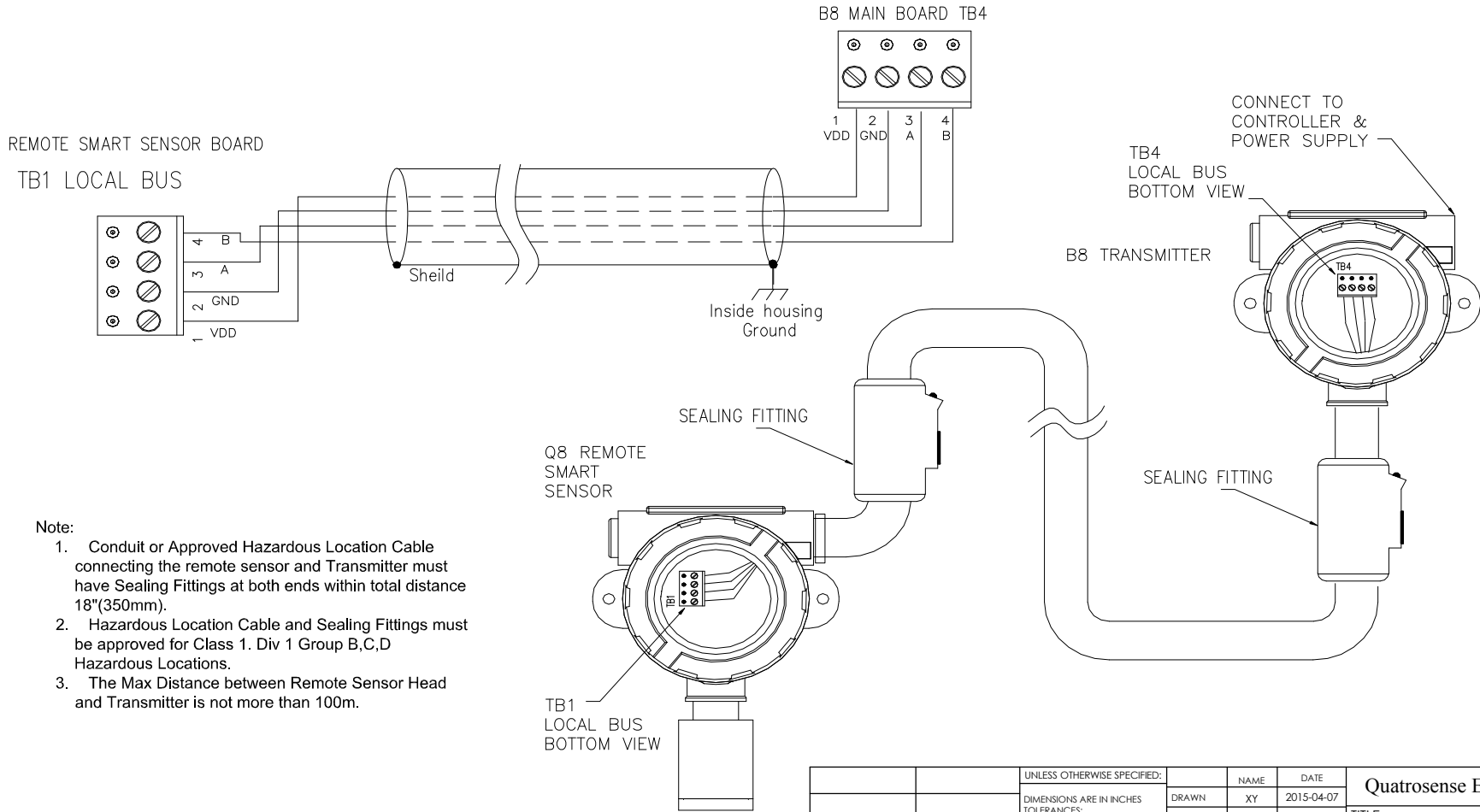
- B8 supports BACnet MS/TP master or slave protocol
- B8 default baud rate is 38400bps
- Each B8 on the MS/TP network must have a unique BACnet MAC address and unique Device Instance Number (Object ID)
 - B8 valid MAC addresses are 0-127 for master node, 0-254 for slave node
 - B8 default MAC address is 126
 - Default Device Instance Number is 4005
- Avoid running communication wires or sensor input wires next to AC power wires or the relay output wires. These can be sources of noise that can affect signal quality.
- When the B8 input power is AC, the 24VAC can be either grounded or non-grounded. Polarization is very important when the B8 is connected to a network. Make sure the Neutral is connected to the GND of TB6.

PROPRIETARY AND CONFIDENTIAL
 THE INFORMATION CONTAINED IN THIS DRAWING IS THE SOLE PROPERTY OF <INSERT COMPANY NAME HERE>. ANY REPRODUCTION IN PART OR AS A WHOLE WITHOUT THE WRITTEN PERMISSION OF <INSERT COMPANY NAME HERE> IS PROHIBITED.

		UNLESS OTHERWISE SPECIFIED:		NAME	DATE	Quatrosense Environmental Ltd TITLE: B8 INSTALLATION DRAWING SIZE B DWG. NO. 86350-102-000 REV B SCALE: 1:2 SHEET 2 OF 3	
		DIMENSIONS ARE IN INCHES		DRAWN	XY		2015-04-07
		TOLERANCES:		CHECKED	XY		2015-04-07
		FRACTIONAL ±		ENG APPR.	XY		2015-04-07
		ANGULAR: MACH ± BEND ±		MFG APPR.			
		TWO PLACE DECIMAL ±		Q.A.			
		THREE PLACE DECIMAL ±		COMMENTS:			
		INTERPRET GEOMETRIC TOLERANCING PER:					
		MATERIAL					
		FINISH					
NEXT ASSY	USED ON						
APPLICATION		DO NOT SCALE DRAWING					

B8 and Remote Smart Sensor Assembly Connection

REVISIONS				
ZONE	REV.	DESCRIPTION	DATE	APPROVED
-	-	See Sheet1	-	-



- Note:
1. Conduit or Approved Hazardous Location Cable connecting the remote sensor and Transmitter must have Sealing Fittings at both ends within total distance 18"(350mm).
 2. Hazardous Location Cable and Sealing Fittings must be approved for Class 1, Div 1 Group B,C,D Hazardous Locations.
 3. The Max Distance between Remote Sensor Head and Transmitter is not more than 100m.

PROPRIETARY AND CONFIDENTIAL
 THE INFORMATION CONTAINED IN THIS DRAWING IS THE SOLE PROPERTY OF <INSERT COMPANY NAME HERE>. ANY REPRODUCTION IN PART OR AS A WHOLE WITHOUT THE WRITTEN PERMISSION OF <INSERT COMPANY NAME HERE> IS PROHIBITED.

		UNLESS OTHERWISE SPECIFIED:				NAME		DATE		Quatrosense Environmental Ltd	
		DIMENSIONS ARE IN INCHES		DRAWN		XY		2015-04-07		TITLE: B8 INSTALLATION DRAWING	
		TOLERANCES:		CHECKED		XY		2015-04-07			
		FRACTIONAL: ±		ENG APPR.		XY		2015-04-07			
		ANGULAR: MACH ± BEND ±		MFG APPR.							
		TWO PLACE DECIMAL ±		Q.A.		XY		2015-04-07		SIZE DWG. NO.	
		THREE PLACE DECIMAL ±								B 86350-102-000	
		INTERPRET GEOMETRIC TOLERANCING PER:								REV	
		MATERIAL								B	
		FINISH								SCALE: 1:2 WEIGHT:	
NEXT ASSY		USED ON								SHEET 3 OF 3	
APPLICATION		DO NOT SCALE DRAWING									